



  
**ALU-GARDEGE**  
ALUMINIUM SECURITY SCREENS

# Protect Range

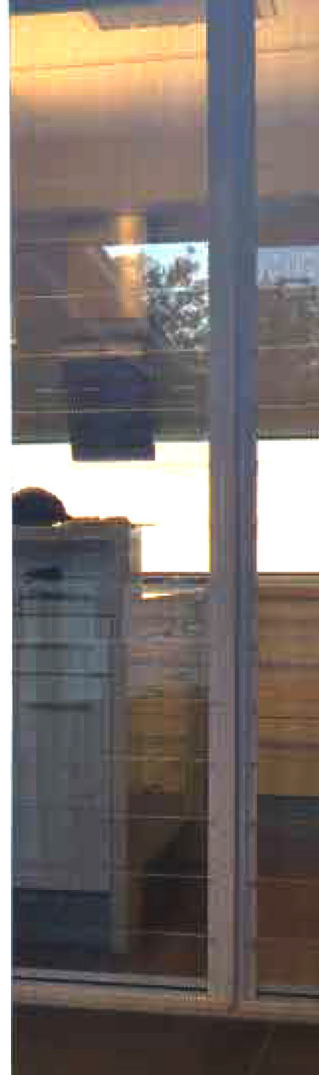
## Alu-Gard® Edge

**Strength, Security  
and Durability with  
Excellent Direct  
Clarity of Vision.**

Alu-Gard Edge is the latest addition to the Alu-Gard range, the All-Aluminium security screening solution for Australian conditions.

Edge is a PVC pressure retention system that retains the Alu-Gard perforated aluminium sheet in an extruded aluminium frame.

Alu-Gard Edge not only provides security, clarity of vision and strength, it is also corrosion resistant and looks great.



Side  
Angle View



# Alu-Gard® Edge

## Key Features

- Tested and passed Australian Standards.
- Choice of retention systems.
- Manufactured in Australia.
- Part of a wide range of security and screening solutions.

## Alu-Gard® Edge Design

Alu-Gard Edge utilises a strong (1.6mm thick) aluminium sheet that is perforated and powder coated in Australia to standards. The sheet is retained in a frame with bespoke PVC pressure retention system. The resulting screen is strong, extremely resistant to corrosion and provides excellent direct clarity of vision.

## The Complete Range

Custom Screens now offers the complete range of screening systems from our top of the range Invisi-Gard® 316 Stainless Steel Security Screens, through to Alu-Gard®, Federation® Cast Panels, Alu-Grille® Diamond Grilles, Vision-Gard™ one way vision security screen, fibreglass and aluminium insect screen and all the associated accessories. For a history of great service and quality built products when considering an aluminium screen door system, there's only one place that has all the solutions.

## Choice of Stylish Colours

With Alu-Gard Edge products, matching the colour to existing door and window frames is not a problem.

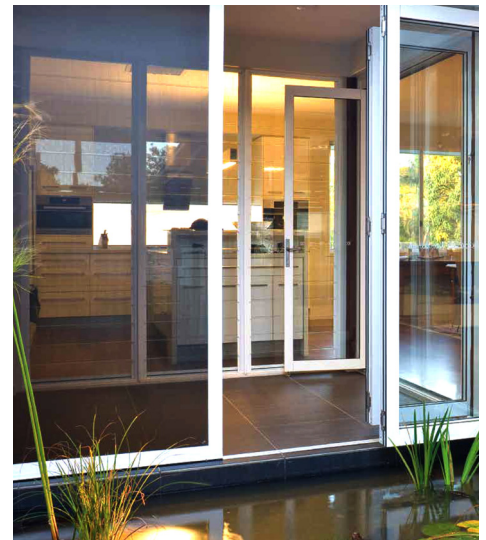
A full range of powder coated colours along with anodised finishes or decorative imaging are readily available from your Alu-Gard Edge dealer.

## Custom Built

All Alu-Gard Edge products are custom built, made to measure to suit your exact requirements.

Alu-Gard Edge Security Screens are suitable for a wide range of residential and commercial applications including the following:

- Hinged Doors
- Sliding Doors
- Security Window Screens
- Balustrade
- Fencing



## Tested Performance

### Security

Australian Standard AS5041 – 2003 Methods of Test – Security Screen Doors and Window Grilles

	Dynamic Impact Test	✓
	Jemmy Test	✓
	Knife Shear Test	✓

### Child Fall Prevention

Australian Standard AS5203 – 2016 Protection of Openable Windows/Fall Prevention – Test Sequence & Compliance Method

	Resist 250N Outward Force	✓
--	---------------------------	---

### Bushfire

2mm hole diameter meets bushfire requirements up to BAL-29

	BAL-29 Compliant	✓
--	------------------	---

## Technical Specifications

Material Grade	5005 H34
Thickness	1.6mm
Hole Diameter	2.0mm
Paint	Dulux Black Matt
% Open Area	40%

